

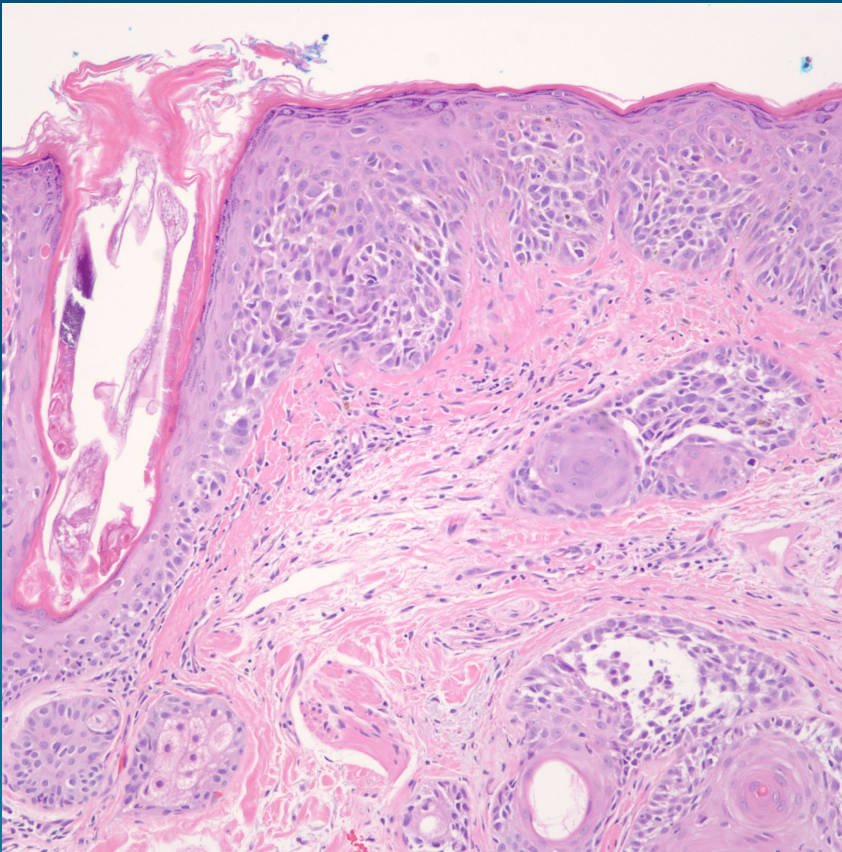
# What is the best diagnosis?

- A. Bowen's disease
- B. Paget's disease
- C. Epidermodysplasia verruciformis
- D. Superficial basal cell carcinoma
- E. Malignant melanoma in situ, lentigo maligna type

Malignant melanoma,  
Lentigo maligna type



# Pearls



- Expansive and dyscohesive nests of pleomorphic melanocytes arranged at the dermal-epidermal junction
- Melanocytes usually spindled and extend along adnexal epithelium
- Variable pigmentation
- Usually severe solar elastosis